

Proficy* Plant Applications 4.4

Make Business Sense out of Real-Time Production Data

Version 4.4 Capabilities

- Enhanced reporting capabilities
- Improved runtime displays
- Better deployment capabilities, including new Model Configuration tools
- Advanced technology support
 - VMWare®
 - Citrix®
 - Microsoft® Clustering
- Continued connectivity to Proficy Software modules to expand your solutions footprint
 - Proficy Maintenance Gateway*
 - Proficy Enterprise Connector
 - Proficy Real-Time Information Portal
 - Proficy Historian

Proficy Plant Applications has long been a cornerstone of GE Intelligent Platforms' Production Management Software suite. Now, with version 4.4, Plant Applications is even more powerful, decreasing your time-to-value and making it easier for you reach your production, quality and cost targets.

Faster Time-to-Value

While Plant Applications is relied on to solve complex problems, version 4.4 was designed to get you up and running faster and solving problems sooner. The new Model Configuration tools extend the power of the software's event detection and modeling sub-system. Those capabilities, coupled with improved deployment tools, make configuration of your system faster and more repeatable. Likewise, the improved runtime displays and enhanced reporting capabilities improve the software's ability to get the right information to the right people - on the plant floor and in operations, quality, process and management offices.

Advanced Technology

Your mission-critical production operations need technological advances that move your systems forward, not hold you back. Plant Applications v4.4 supports VMWare virtualization, Citrix remote desktop architectures and Microsoft® Server Clustering for improved reliability and system dependability.

Plant Applications v4.4 also continues to provide the foundation for extending the value of your systems beyond a unit, line or area of the plant.

By connecting **Proficy Maintenance Gateway** into the events and information within Plant Applications, you can drive your plant / corporate maintenance systems with accurate, timely production data - empowering you to get equipment performance and maintenance information in the same system from anywhere in the plant. Beyond your maintenance operations, Plant Applications drives connectivity from your plant to your enterprise business systems through its integration with **Proficy Enterprise Connector**. Connectivity to these critical enterprise applications in your business makes both your plant and enterprise systems better together than either could be working on its own.

Trusted Analytics

Plant Applications has new reporting features, but it still delivers all the powerful reporting and analytical capabilities companies have relied on for years to make business sense out of their real-time production data. Track product and process genealogies and quality, order and performance metrics on the line or across the plant to get more out of your production lines than just finished goods.



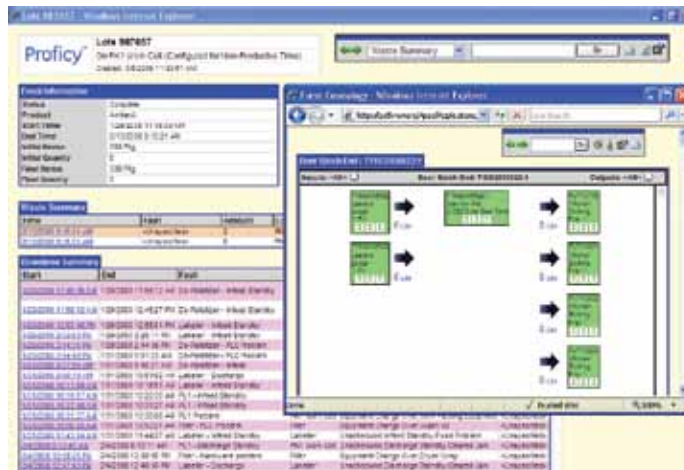
Proficy* Plant Applications 4.4

Proficy Plant Applications

- Integrated with Proficy Production Management Software, Batch and SCADA suites
- Open & layered architecture extends the value of existing plant systems by layering advanced application capabilities on top of existing infrastructure
- Modular & scalable applications stand alone or work together to support installations small or large, local or global
- Advanced architecture is non-intrusive to plant floor controls and operations and supports the broad range of production environments present in typical global companies
- Proven results across a variety of industries in more than 34 countries around the world
 - \$4,000,000 operating savings in year 1 Paper producer
 - 25% decrease in defects International glass manufacturer
 - 10% increase in OEE Food and beverage company
 - Elimination of overruns Major global brewer
 - 20% decrease in inventory Global CPG company



The enhanced operator displays in Plant Applications v4.4 make entering and viewing information easier so you can make informed decisions faster.



Plant Applications v4.4 still leverages all the powerful analytical and reporting capabilities that made previous versions so valuable in tracking genealogy, quality and operating performance across a site or across a business.

About GE Intelligent Platforms

GE Intelligent Platforms, a General Electric Company (NYSE: GE), is an experienced high-performance technology company and a global provider of hardware, software, services, and expertise in automation and embedded computing. We offer a unique foundation of agile, advanced and ultra-reliable technology that provides customers a sustainable advantage in the industries they serve, including energy, water, consumer packaged goods, government and defense, and telecommunications. GE Intelligent Platforms is a worldwide company headquartered in Charlottesville, VA and is part of GE Home and Business Solutions. For more information, visit www.ge-ip.com.

GE Intelligent Platforms Contact Information

Americas: **1 800 433 2682** or **1 434 978 5100**

Global regional phone numbers are listed by location on our web site at www.ge-ip.com/contact

www.ge-ip.com

